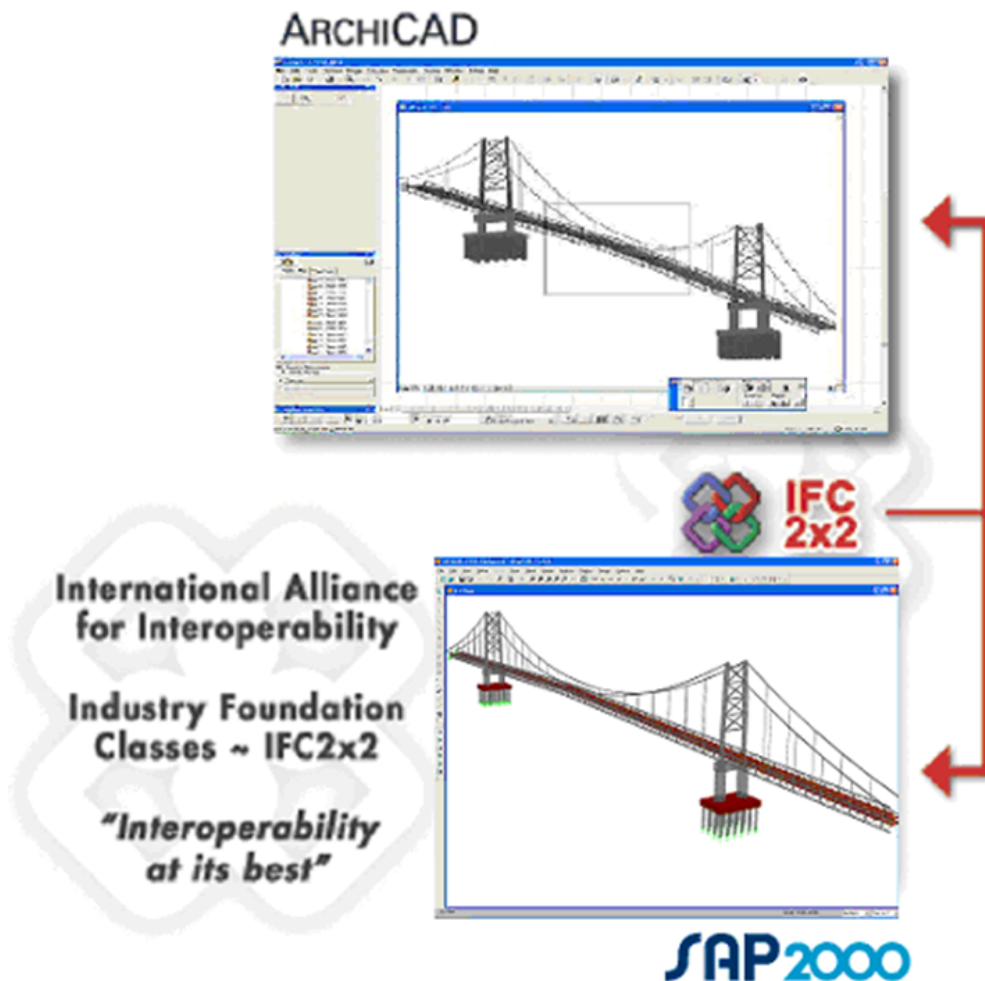


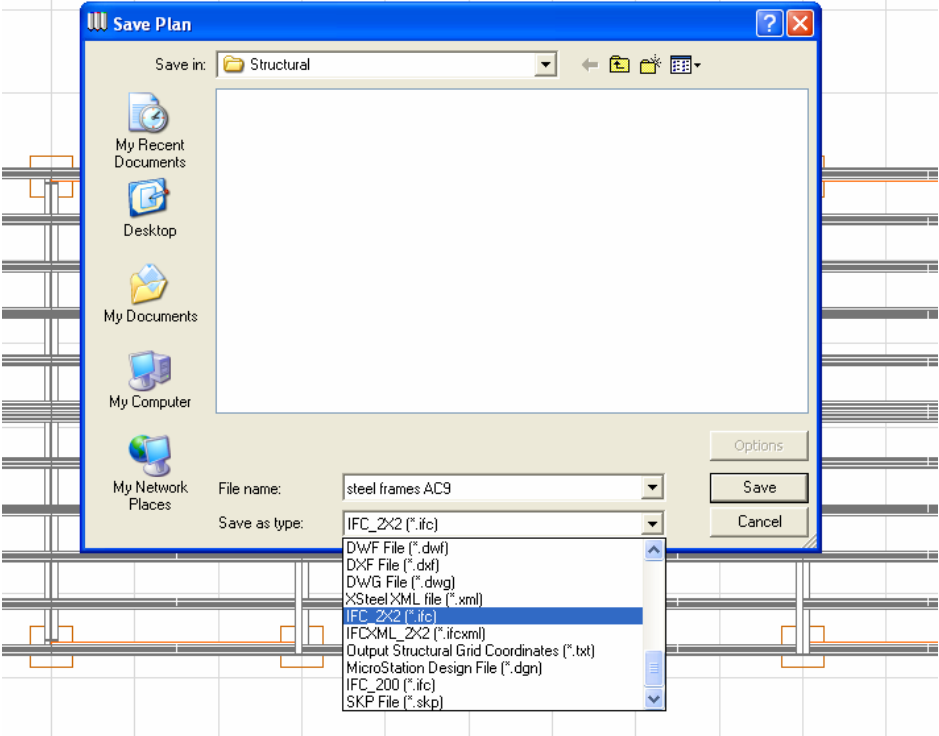
AC11-SAP2000 v10 I/O

Workflow:

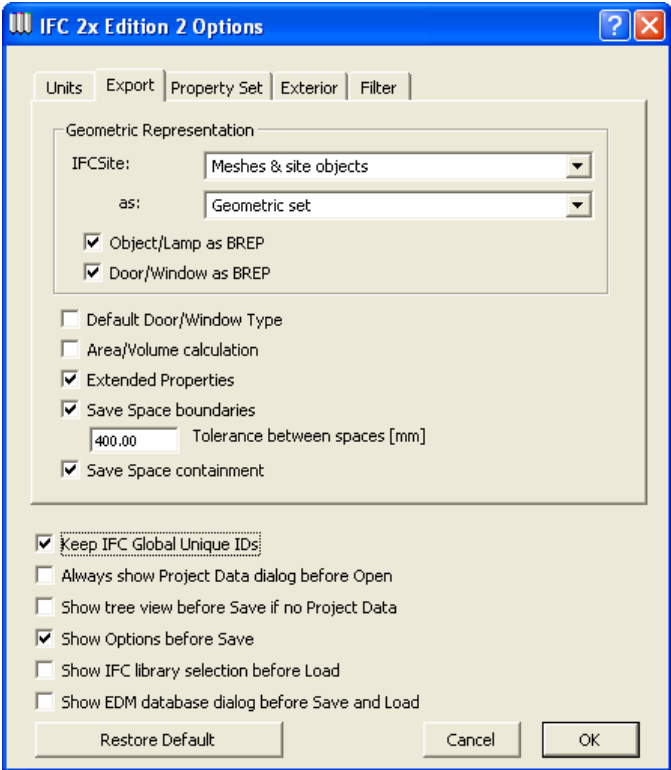
- The architect creates a model of the structure that he/she imagines. For this the architect chooses the spans and the profile (H, L etc.) that he/she would like to use from the standard ArchiCAD Library - and for the other load-bearing structures chooses the beam, column, slab and wall tool.
- The model is now exported through IFC 2x2 into SAP2000® v10.
- In SAP2000 the structural engineer does the analysis of the model and chooses the right size profiles.
- The structural engineer exports back this model through IFC 2x2 into ArchiCAD®.
- The architect creates the architectural documentation based on this model in ArchiCAD.
- The structural engineer creates the structural documentation based on this model in SAP2000.



1. From the ArchiCAD Floor Plan view, choose save as IFC 2x2.



2. Do not forget to have the following configuration on the Export tab page:



3. To import a model into ArchiCAD from SAP2000 through IFC 2x2, do the following:

