

ArchiCAD 11 - ETABS v9 I/O

Workflow:

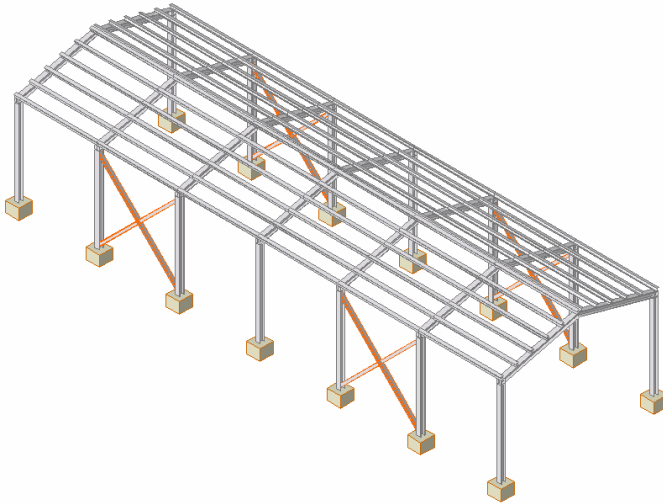
- The architect creates a model of the structure that he imagines. For this he chooses the spans and the profile (H, L etc.) he would like to use from the standard ArchiCAD Library, and for the other load-bearing structures the beam, column, slab and wall tool.
- He exports this model through IFC 2x2 into ETABS® v9.
- In ETABS, the structural engineer does the analysis of the model and chooses the right size profiles.
- The structural engineer exports back this model through IFC 2x2 into ArchiCAD.
- The architect creates the architectural documentation based on this model in ArchiCAD.
- The structural engineer creates the structural documentation based on this model in ETABS.



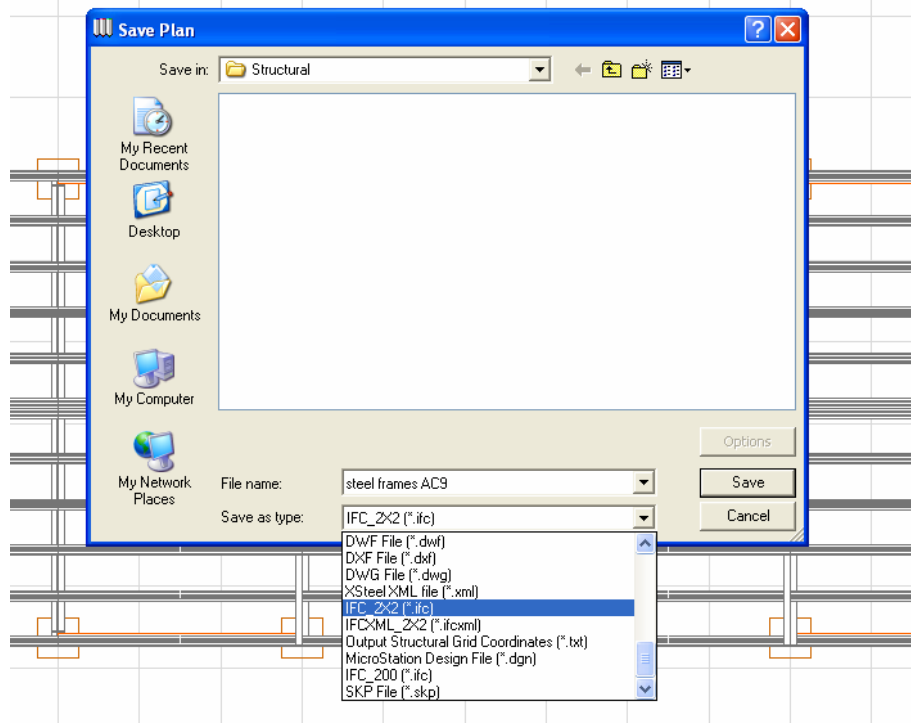
The I/O Process:

To use exchange data, you have to do the following:

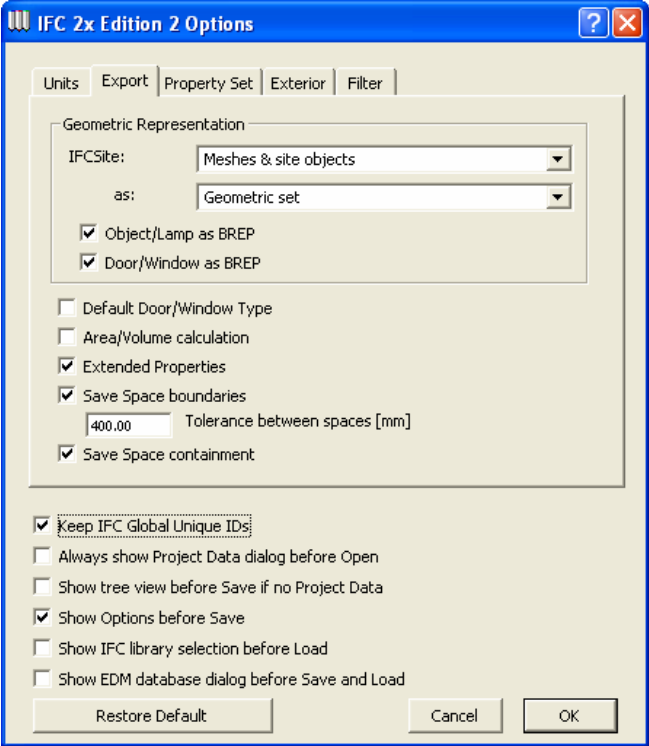
1. Download the latest version of Graphisoft's IFC 2x2 from <http://www.graphisoft.com/support/ifc/downloads/public/>, and uncompress it.
2. Install the add-on into your ArchiCAD 11 (Add-Ons Folder) when the ArchiCAD is not running by double-clicking on the uncompressed icon.
3. Start your ArchiCAD and, using the standard AC11 Library and the ArchiCAD tools assemble the structure you would like.



4. From the ArchiCAD Floor Plan view, choose save as IFC 2x2.



5. Do not forget to have the following configuration on the Export tab page:



6. To import a model into ArchiCAD from ETABS through IFC 2x2, do the following:

