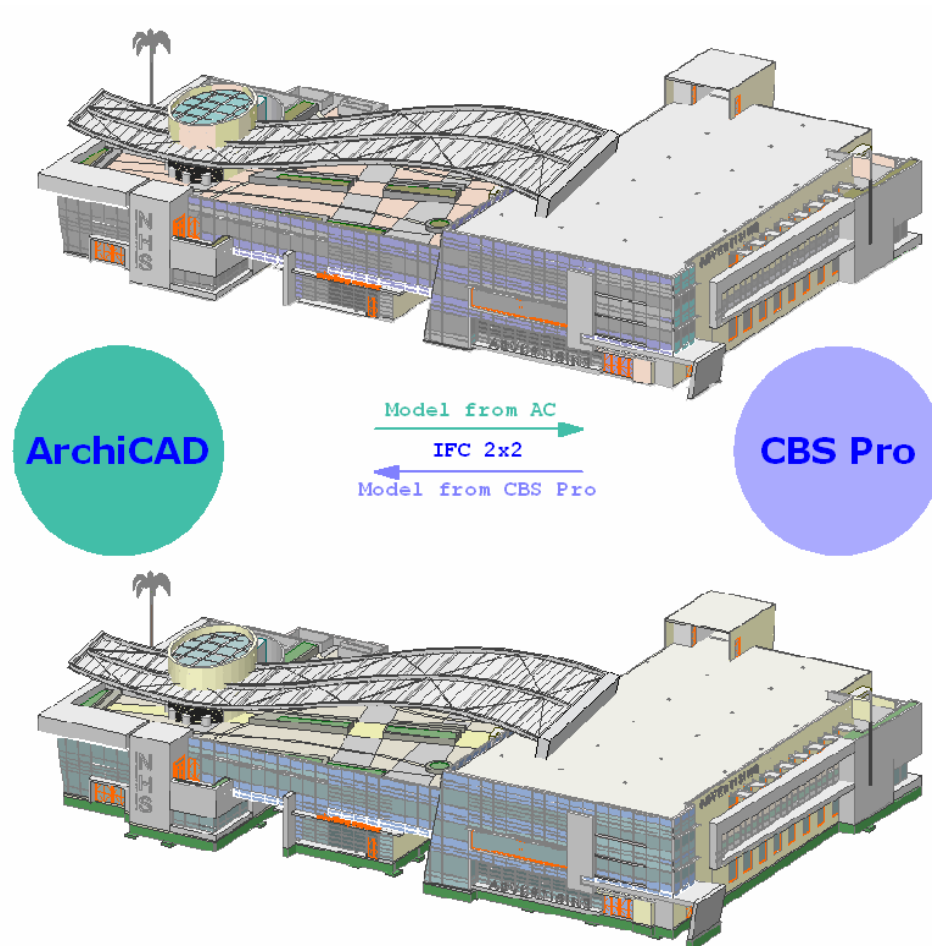


ArchiCAD 11 - CBS Pro v20 I/O

Workflow:

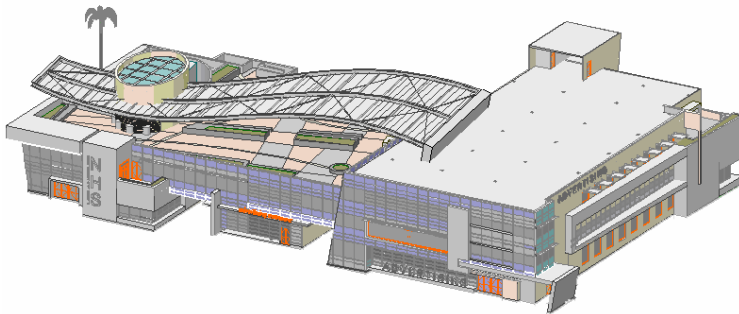
- The architect creates a model of the structure that he imagines. For this he chooses the spans and load-bearing structures such as the beams, columns, slabs and walls.
- He exports this model through IFC2x2 to CBS Pro 20.
- In CBS Pro®, the structural engineer can do the analysis of the model and chooses the structural thickness or designs the foundations (see below on the model the foundations added with green coming from CBS Pro).
- The structural engineer exports this model back through IFC 2x2 into ArchiCAD®.
- The architect creates the architectural documentation based on this model in ArchiCAD.
- The structural engineer creates the structural documentation based on this model in CBS Pro.



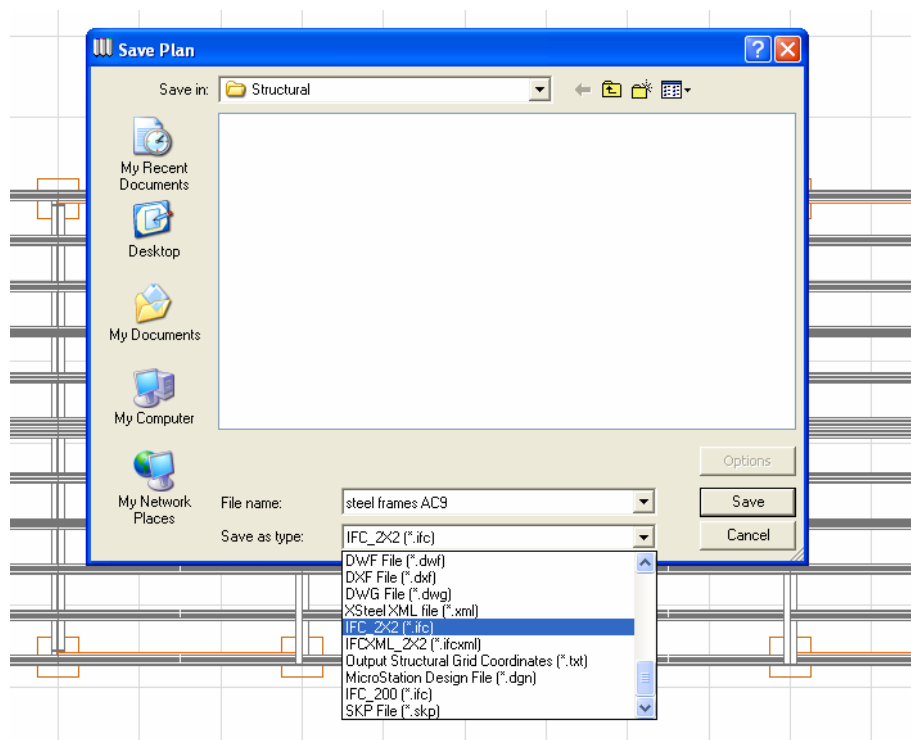
The I/O Process:

To use exchange data, you have to do the following:

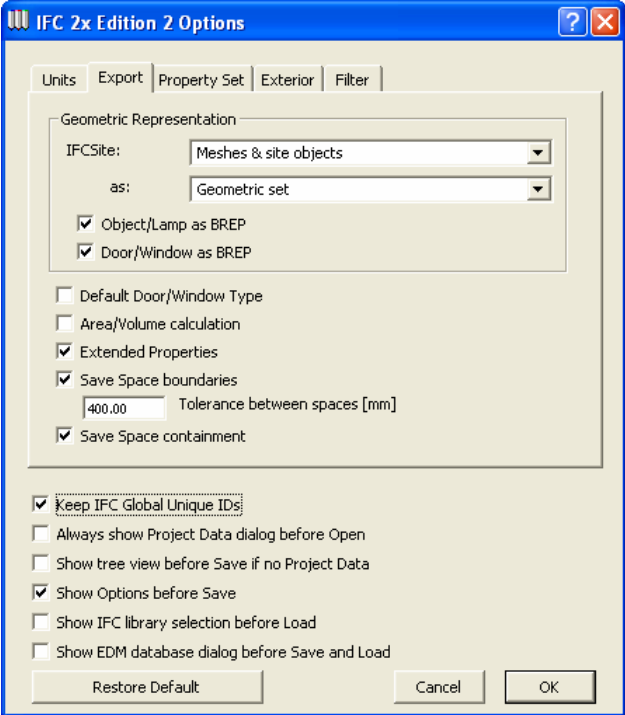
1. Download the latest version of Graphisoft's IFC 2x2 from <http://www.graphisoft.com/support/ifc/downloads/public/> and uncompress it.
2. Install the add-on into your ArchiCAD (Add-Ons Folder) when ArchiCAD is not running by double-clicking on the uncompressed icon.
3. Start your ArchiCAD, and using the standard ArchiCAD Library, assemble the structure you would like.



4. From the ArchiCAD Floor Plan view choose "save as IFC 2x2".



5. Don't forget to have the following configuration on the Export tab page:



6. To import a model into ArchiCAD from CBS Pro through IFC 2x2, do the following:

