

GRAPHISOFT®
ARCHICAD 10
a Virtual Building Solution

USA Library New Features

Preface

Dear AC User,

This Manual contains a short description of the changes and enhancements that have been completed in the US Library since the AC9 SE version. This document gives you a list of the new or modified library objects and detailed instructions on how to use them.

Important Note:

We have significantly changed the parameters and the user interface of some objects (e.g doors and windows). Therefore, this library is not compatible with the AC SE9 US library. In order to avoid conflicts between new and old objects, please don't load this library over an existing project and do not load old and new ArchiCAD libraries together! Please also read the detailed object documentations before starting to use them.

Acknowledgements

We would like to thank all the members of the US Local Content Beta Forum and the beta testers who contributed to the development of this library.

Doors and Windows

List of Library Parts

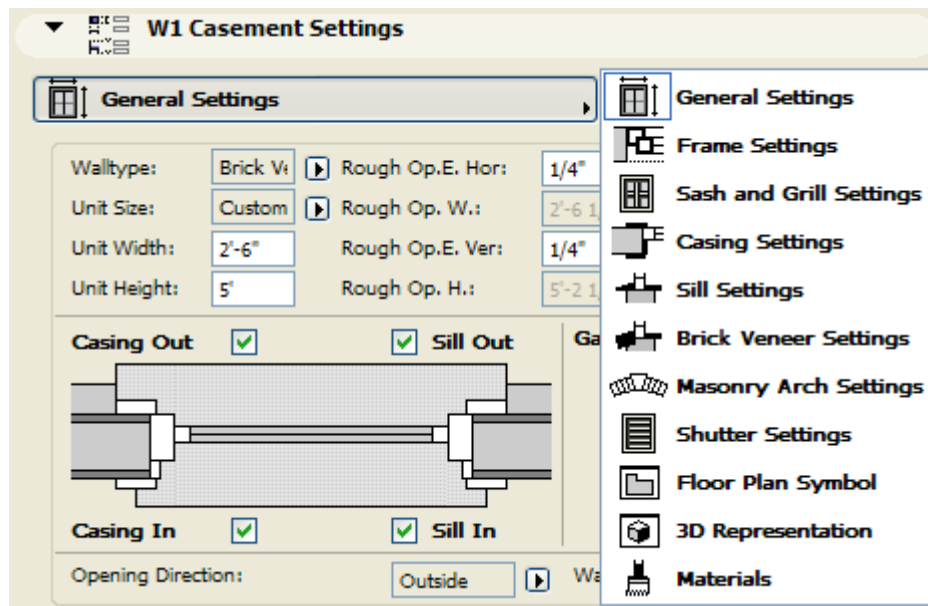
All elements of the **Doors** and **Windows** folders have been updated (except wall openings and bay and bow windows), and many errors were fixed.

Features

- New, redesigned interfaces for easier parameter settings
- New, easy way to define custom panels and sashes by saving them as custom components (even in Bay and Bow windows).
- Bay window: Wall on sides option
- Fixes of reported bugs

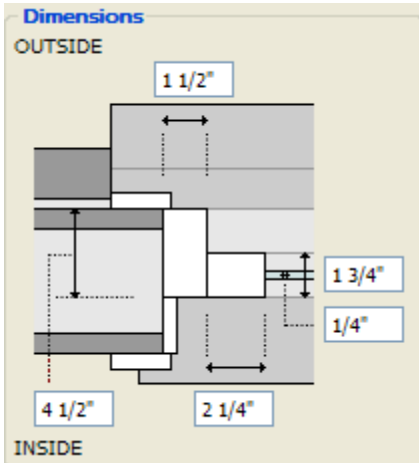
New Interface

The new interface allows faster navigation among the different tab pages of the objects. Redesigned graphical representation makes it easier to understand and identify the meaning of different parameters.

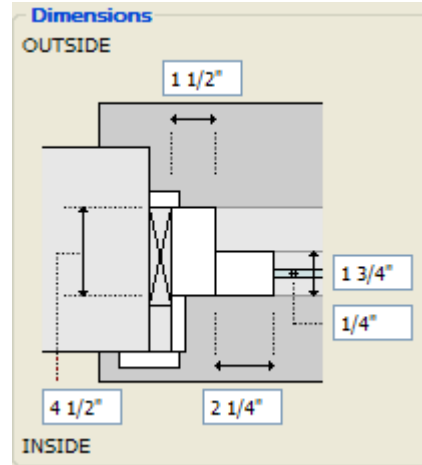


Dynamic interface page

The tab pages are dynamic, they always show relevant information.



Dynamic pages change their content

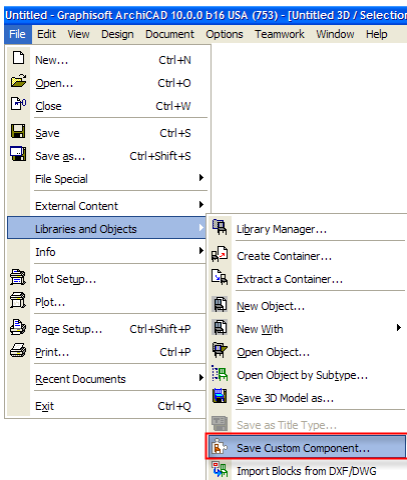


Dynamic pages change their content

Custom components

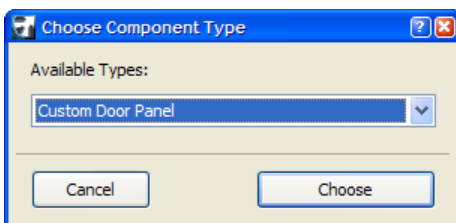
The users will be able to create custom door panels and windows sashes in a few steps:

- Draw the structure
- Open the 3D window
- Select the elements
- Select the "Save as custom components" command



Save custom component

- Select component type

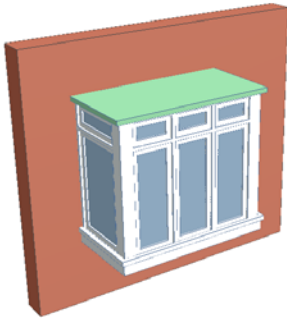


Select component type

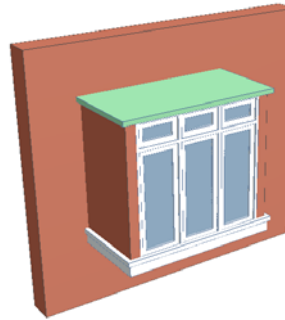
- Enter a name for the component. This name will be usable as custom panel/sash from the door/window object.

Bay Window: Wall on sides

It is possible now to use walls on the sides of Bay windows, by adjusting a single parameter.



Wall on sides: Off



Wall on sides: On

Curtain Walls

List of Library Parts

All elements of the **08 Door-windows\Curtain Walls** folder have been updated.

Features

- Redesigned user interface
- Separated horizontal and vertical mullion styles and connections



CW Curved 10



CW Door 10



CW Double Door
10



CW Inclined 10



CW Inclined End
10



CW Revolving
Door 10



CW Straight 10



Grid Horizontal 10

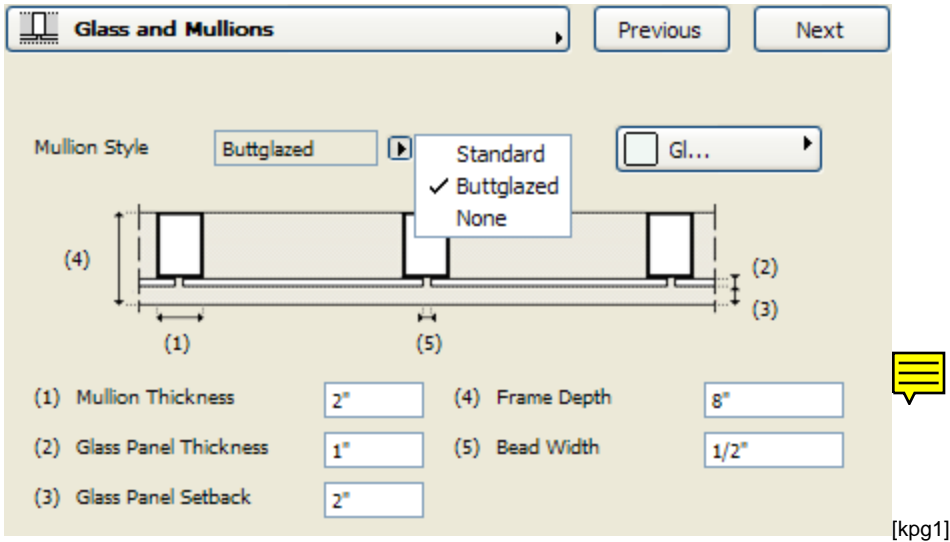


Grid Vertical 10



Grid Vertical
Curved 10

Curtain walls in Library

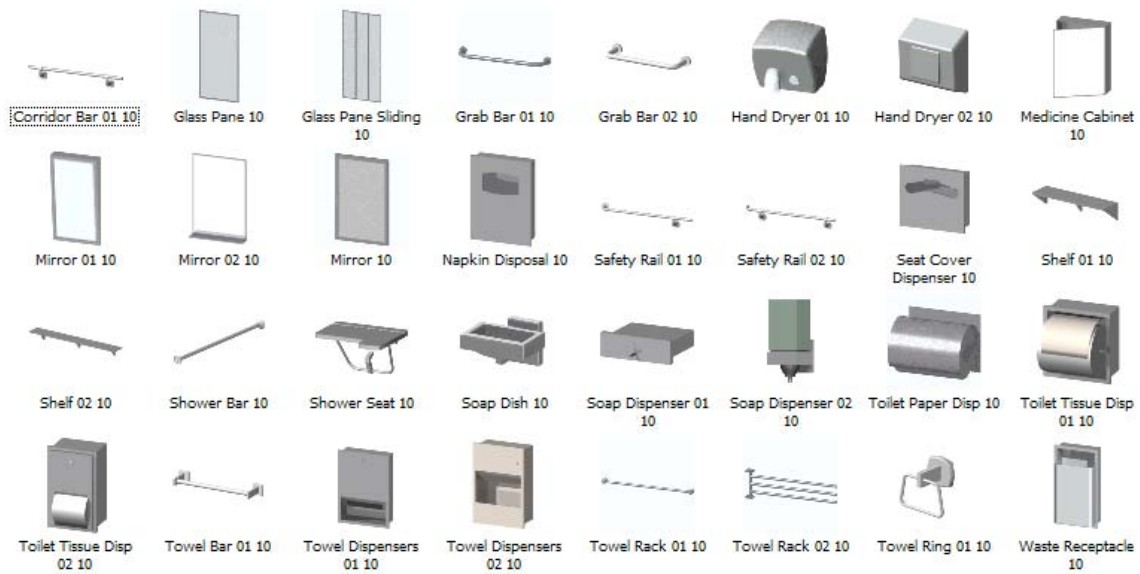


Mullion styles

Commercial Bathroom Accessories

Name of Library Part

25 new objects in 10 Specialties\Bathroom Accessories.



Preview of objects

Features

- Wide range of choices from commercially available bathroom accessories.

P-trap pipe

Name of Library Part

15 Mechanical\Drainage\P Trap.gsm

Features



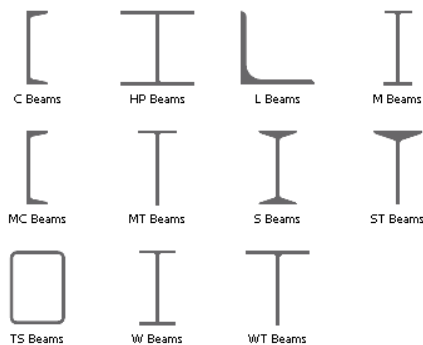
Steel Sections

List of Library Parts

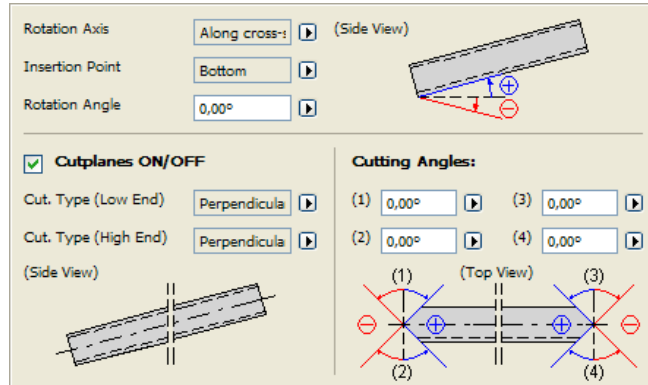
All elements in the **05 Metals\Steel Sections** folder

Features

- New graphical user interface for steel beams
- Corrected errors in cross sections



Available steel sections



Steel interface

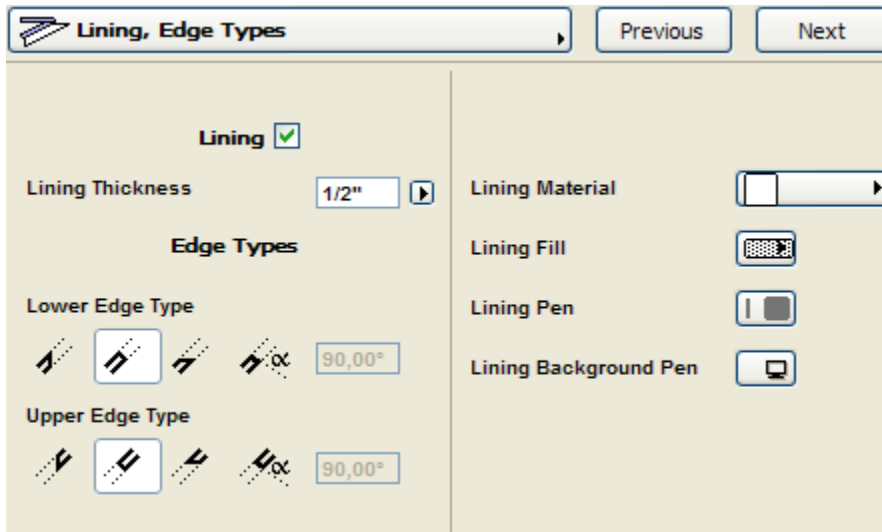
Skylight

List of Library Parts

All skylight objects in **07 Therm and Moist Prot\Dormers and Skylights**

Features

- New interface
- Possibility to create any edge conditions along skylight (except Skylight Round)



Edge conditions for Skylights

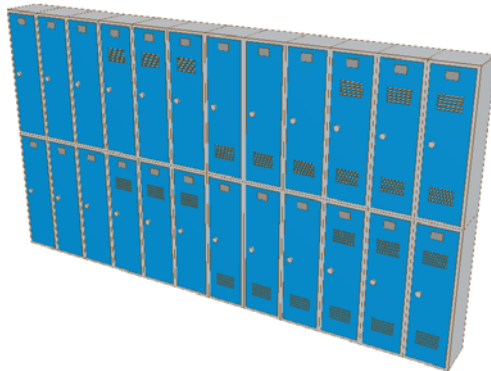
Lockers

Name of Library Part

12 Furnishing/Cabinets and Shelves\Lockers.gsm

Features

- Highly parametric
- Different door styles



Locker door styles

Trees

Location

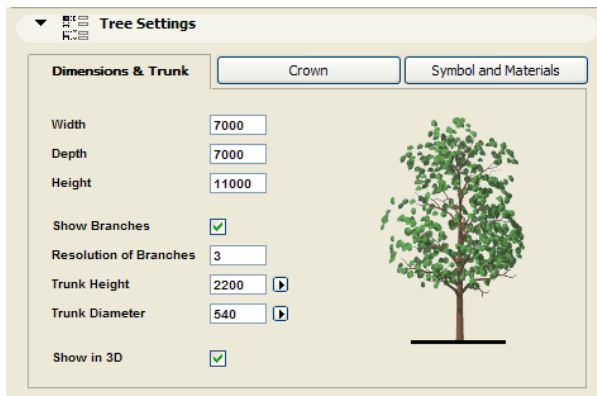
02 Siteworks\Garden

List of objects

Tree Deciduous 01-12

Features

- Option for Detailed, Simple, Ellipsoid 3D model
- Parameters to change the size of trunk, branches and the crown
- Graphical user Interface
- Wide range of 2D symbol types (39 styles)



The Tree Setting dialog



Photorealistic picture of the new trees

House Model for Urban Planning

Location

13 Special Constructions\Basic Shapes

List of objects

- House Model

Features

- Parametric house mass model for urban planners
- Optional roof types

Straight Stair

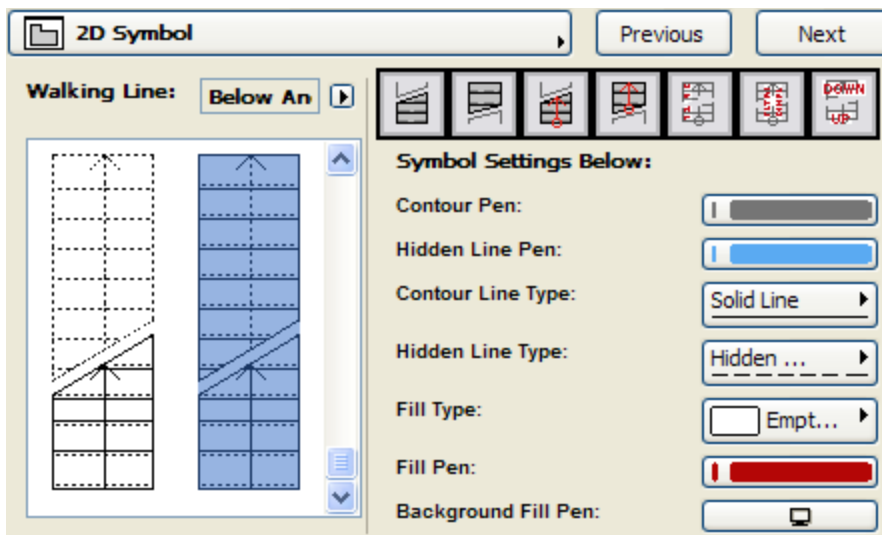
This stair is the first step toward a new stair library. Special thanks to the US Local Content Forum for their help and patience in developing this object.

List of Library Parts

03 Concrete\Stairs\Stair Elements\Wooden Stairs\Stair Straight Wood 02.gsm

Features

- New interface
- Highly flexible floor plan symbol with graphical configuration
- Different tread/rail styles



2D symbol interface for stair



Stair object in 3D

Brick Coursing

Extension for the Detailer library (2D only).

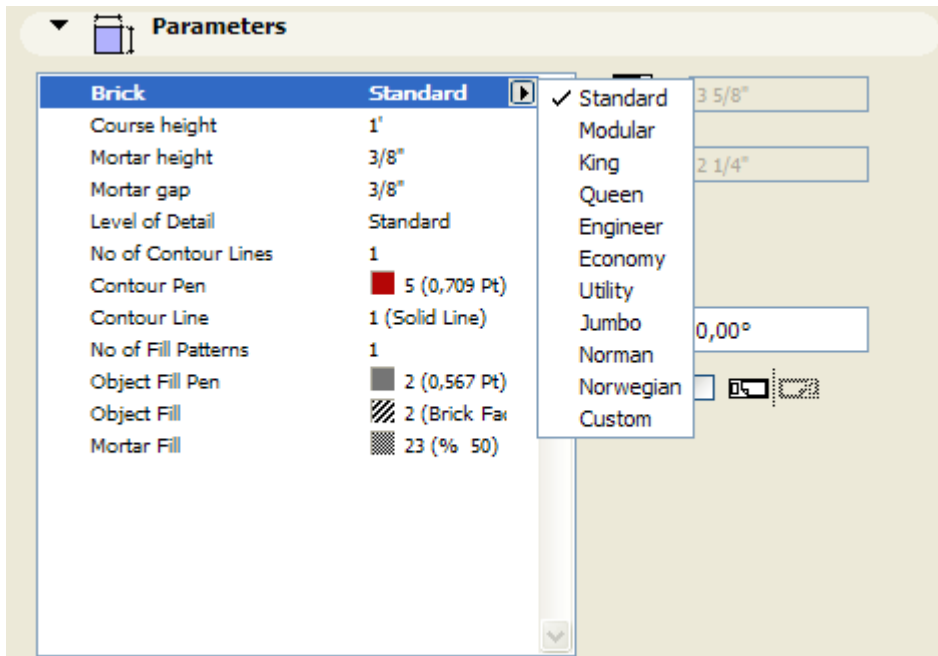
You can create brick courses easily just by stretching this object's height.

List of objects

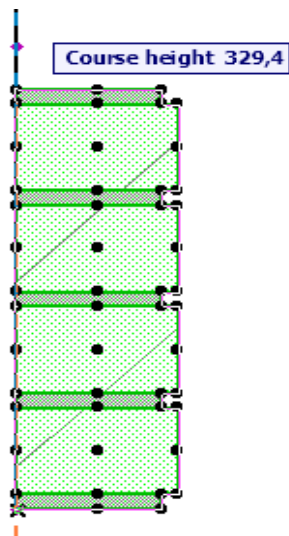
01 General\Detailer Library\Masonry Units\Bricks Common\Brick Coursing

Features

- Typical brick sizes in a popup menu
- Stretchable height
- Parametric mortar size and appearance



Typical brick sizes



Stretch height in 2D